

# RNAV (GNSS), VOR/DME OVERLAY STANDARD DEPARTURE CHART - INSTRUMENT (SID) - ICAO

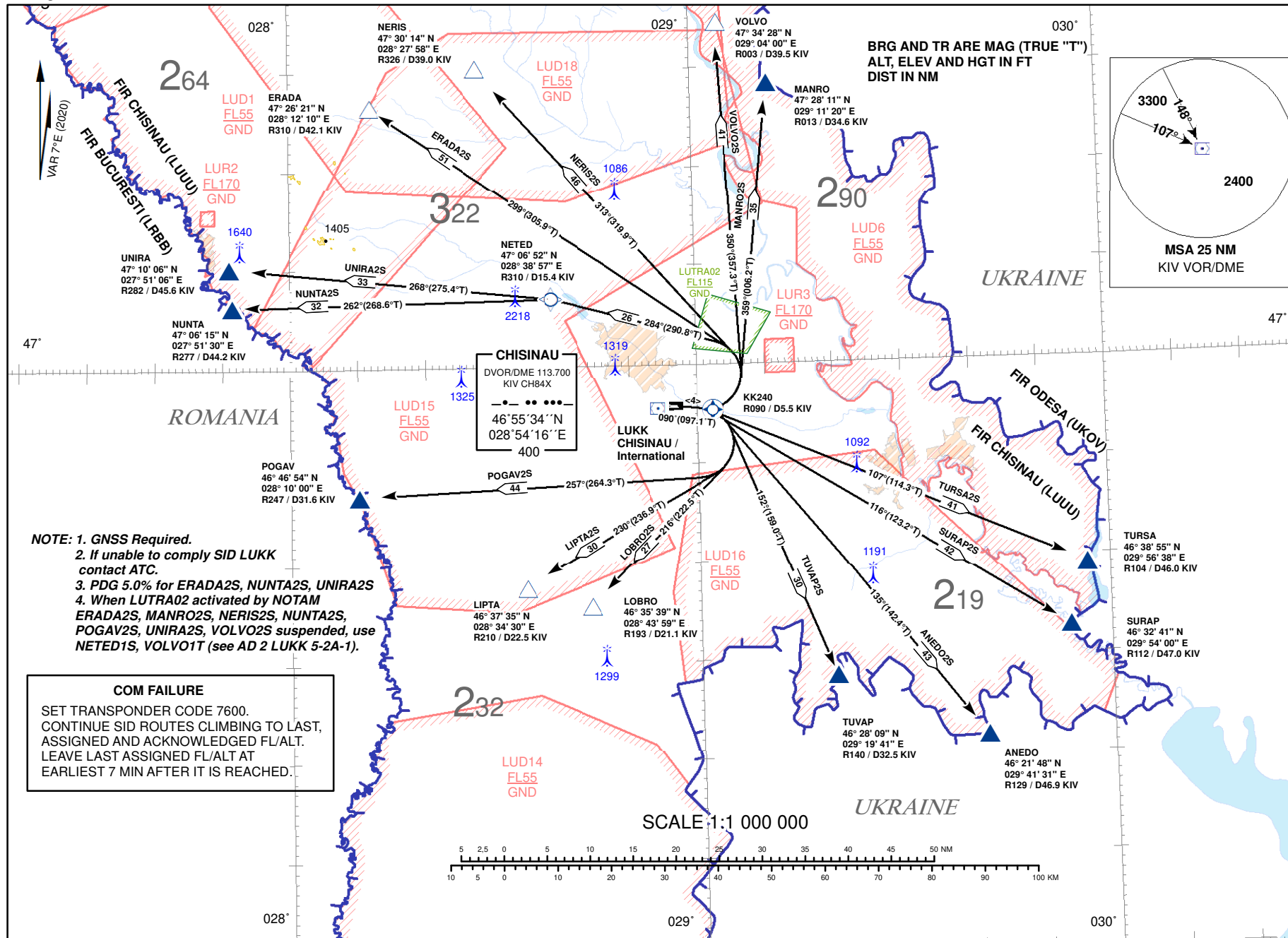
TRANSITION  
ALTITUDE 4000FT

CONTROL: 128.975 MHz  
APPROACH: 133.300 MHz  
TWR: 118.100 MHz

CHISINAU/Int'l (LUKK)  
RWY 09

ANED02S, ERADA2S, LIPTA2S, LOBRO2S,  
MANRO2S, NERIS2S, NUNTA2S, POGAV2S,  
SURAP2S, TURSA2S, TUVAP2S, UNIRA2S, VOLVO2S

Changes: Name of Chart in Notes 5-2A-1 Corrected.



**RNAV(GNSS), VOR/DME OVERLAY  
STANDARD INSTRUMENT  
DEPARTURE (SID) - ICAO**
**CHISINAU/Intl (LUKK)  
RWY 09**
**Procedure Coding Table**

Path Terminator	Waypoint			Course/Track MAG (True)	Dist NM	Turn Direction	Constraints		Navigation Specification	Remarks
	Identifier	Flyover	Coordinates				Level	Speed (kt IAS)		
ANEDO2S										
CF	KK240	Yes	465521.4N 0290219.9E	090 (097.1)	3.5	-	-	-	RNAV 1	Turn at KK240 is calculated with bank 20° and speed 240kt IAS
DF	ANEDO	No	462148.0N 0294131.0E	135 (142.4)	43.3	R	+FL90	-		
ERADA2S										
CF	KK240	Yes	465521.4N 0290219.9E	090 (097.1)	3.5	-	-	-	RNAV 1	Turn at KK240 is calculated with bank 20° and speed 240kt IAS
DF	ERADA	No	472621.0N 0281210.0E	299 (305.9)	51.4	L	+FL80	-		
LIPTA2S										
CF	KK240	Yes	465521.4N 0290219.9E	090 (097.1)	3.5	-	-	-	RNAV 1	Turn at KK240 is calculated with bank 20° and speed 240kt IAS
DF	LIPTA	No	463735.0N 0283430.0E	230 (236.9)	30.3	R	+FL80	-		
LOBRO2S										
CF	KK240	Yes	465521.4N 0290219.9E	090 (097.1)	3.5	-	-	-	RNAV 1	Turn at KK240 is calculated with bank 20° and speed 240kt IAS
DF	LOBRO	No	463539.0N 0284359.0E	216 (222.5)	26.6	R	+FL80	-		
MANRO2S										
CF	KK240	Yes	465521.4N 0290219.9E	090 (097.1)	3.5	-	-	-	RNAV 1	Turn at KK240 is calculated with bank 20° and speed 240kt IAS
DF	MANRO	No	472811.0N 0291120.0E	359 (006.2)	34.8	L	+FL90	-		
NERIS2S										
CF	KK240	Yes	465521.4N 0290219.9E	090 (097.1)	3.5	-	-	-	RNAV 1	Turn at KK240 is calculated with bank 20° and speed 240kt IAS
DF	NERIS	No	473014.0N 0282758.0E	313 (319.9)	46.1	L	+FL80	-		
NUNTA2S										
CF	KK240	Yes	465521.4N 0290219.9E	090 (097.1)	3.5	-	-	-	RNAV 1	Turn at KK240 is calculated with bank 20° and speed 240kt IAS
DF	NETED	No	470652.0N 0283857.0E	284 (290.8)	25.5	L	-	-		
TF	NUNTA	No	470615.0N 0275130.0E	262 (268.6)	32.4	-	+FL80	-		
POGAV2S										
CF	KK240	Yes	465521.4N 0290219.9E	090 (097.1)	3.5	-	-	-	RNAV 1	Turn at KK240 is calculated with bank 20° and speed 240kt IAS
DF	POGAV	No	464654.0N 0281000.0E	257 (264.3)	43.5	R	+FL80	-		
SURAP2S										
CF	KK240	Yes	465521.4N 0290219.9E	090 (097.1)	3.5	-	-	-	RNAV 1	Turn at KK240 is calculated with bank 20° and speed 240kt IAS
DF	SURAP	No	463241.0N 0295400.0E	116 (123.2)	42.2	R	+FL90	-		
TURSA2S										
CF	KK240	Yes	465521.4N 0290219.9E	090 (097.1)	3.5	-	-	-	RNAV 1	Turn at KK240 is calculated with bank 20° and speed 240kt IAS
DF	TURSA	No	463855.0N 0295638.0E	107 (114.3)	40.8	R	+FL90	-		
TUVAP2S										
CF	KK240	Yes	465521.4N 0290219.9E	090 (097.1)	3.5	-	-	-	RNAV 1	Turn at KK240 is calculated with bank 20° and speed 240kt IAS
DF	TUVAP	No	462809.0N 0291941.0E	152 (159.0)	30.2	R	+FL90	-		
UNIRA2S										
CF	KK240	Yes	465521.4N 0290219.9E	090 (097.1)	3.5	-	-	-	RNAV 1	Turn at KK240 is calculated with bank 20° and speed 240kt IAS
DF	NETED	No	470652.0N 0283857.0E	284 (290.8)	25.5	L	-	-		
TF	UNIRA	No	471006.0N 0275106.0E	268 (275.4)	32.8	-	+FL80	-		
VOLVO2S										
CF	KK240	Yes	465521.4N 0290219.9E	090 (097.1)	3.5	-	-	-	RNAV 1	Turn at KK240 is calculated with bank 20° and speed 240kt IAS
DF	VOLVO	No	473428.0N 0290400.0E	350 (357.3)	41.0	L	+FL90	-		